



# QUEENSLAND'S PROTECTED AREAS: Recent developments and opportunities

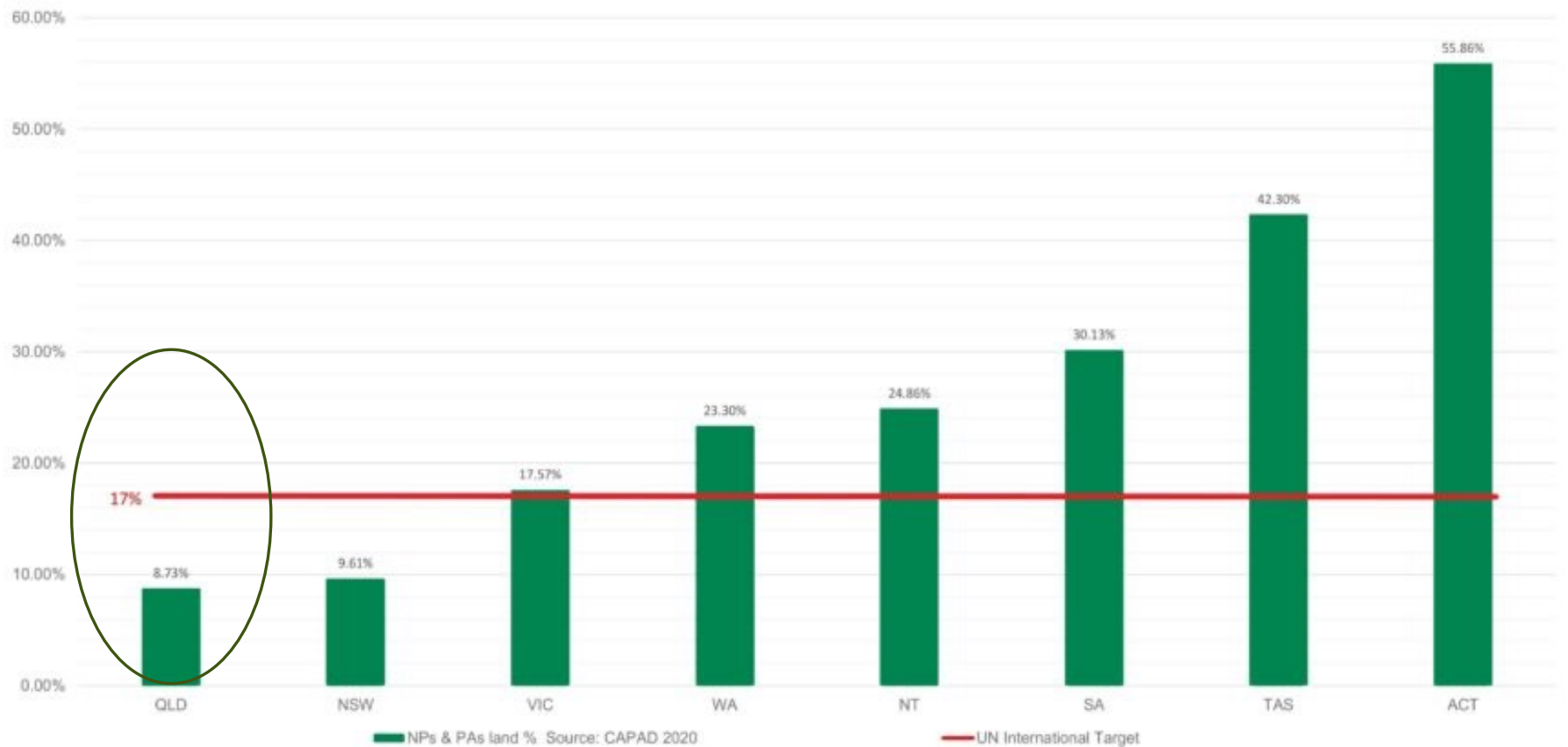
---

PRESENTED BY  
CHRIS THOMAS, CEO NPAQ

15 APRIL 2024

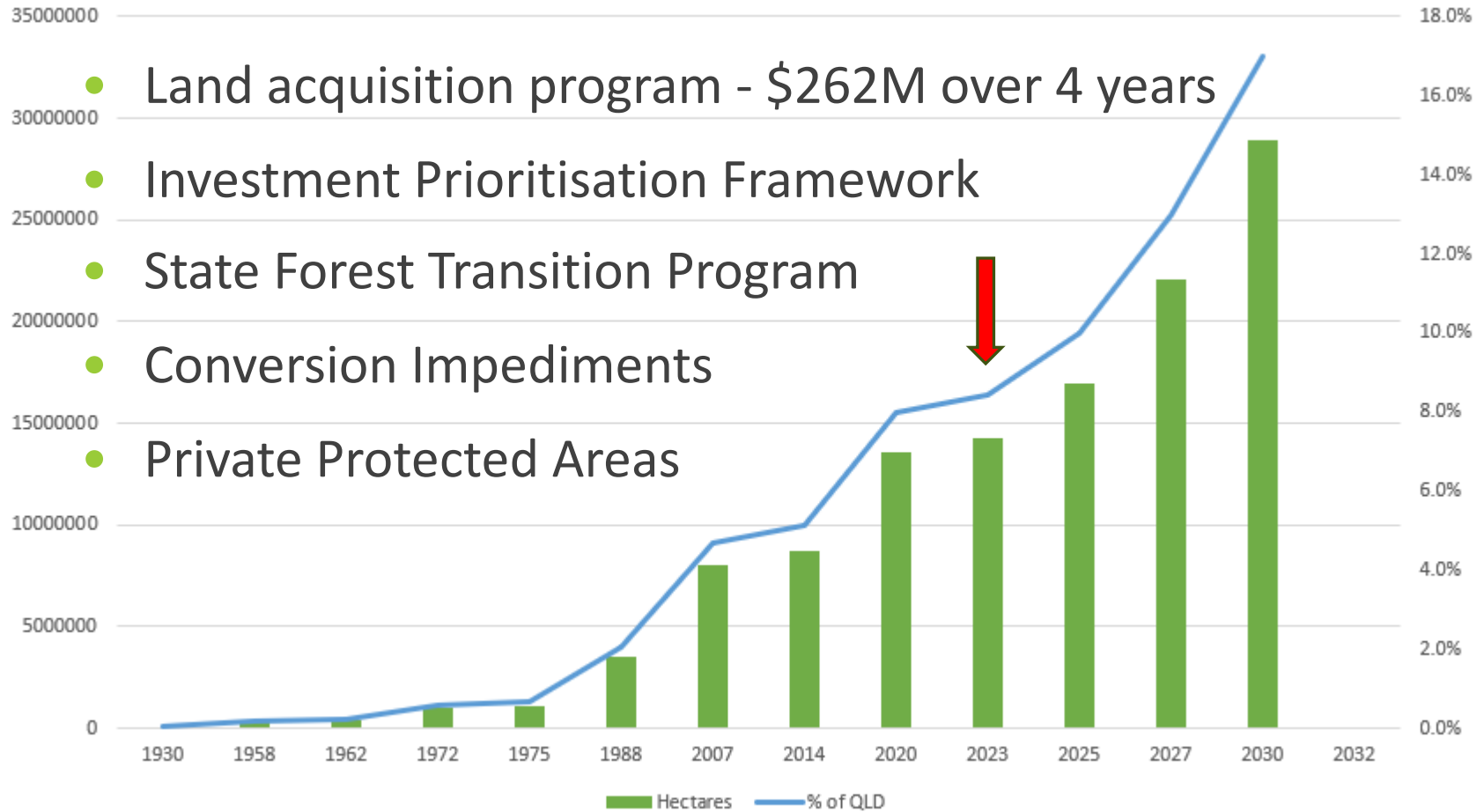
# Status of QLD NPs/PAs - %

National Parks and Other Protected Areas compared to UN International Target



Note: The % for QLD includes The Lakes NP declared in February 2022

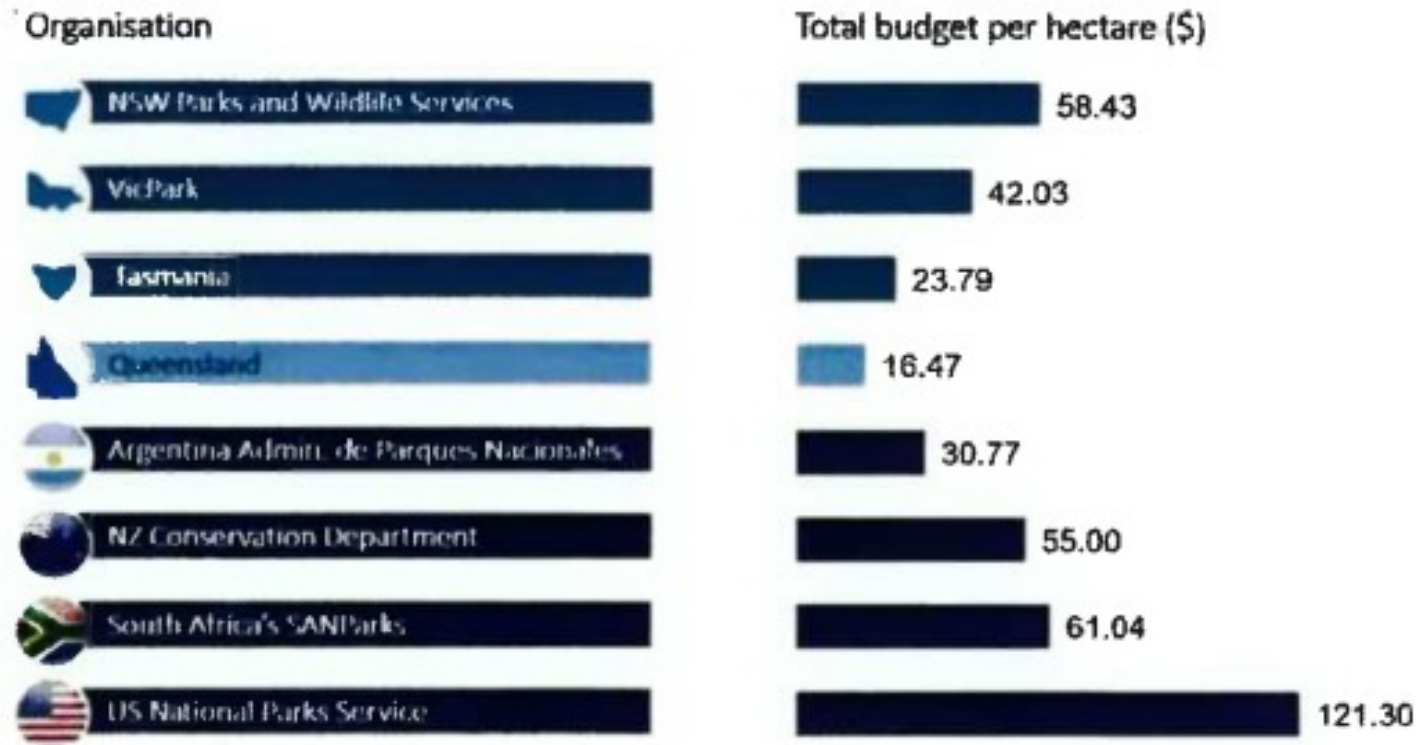
# Expansion



# Park Management Funding



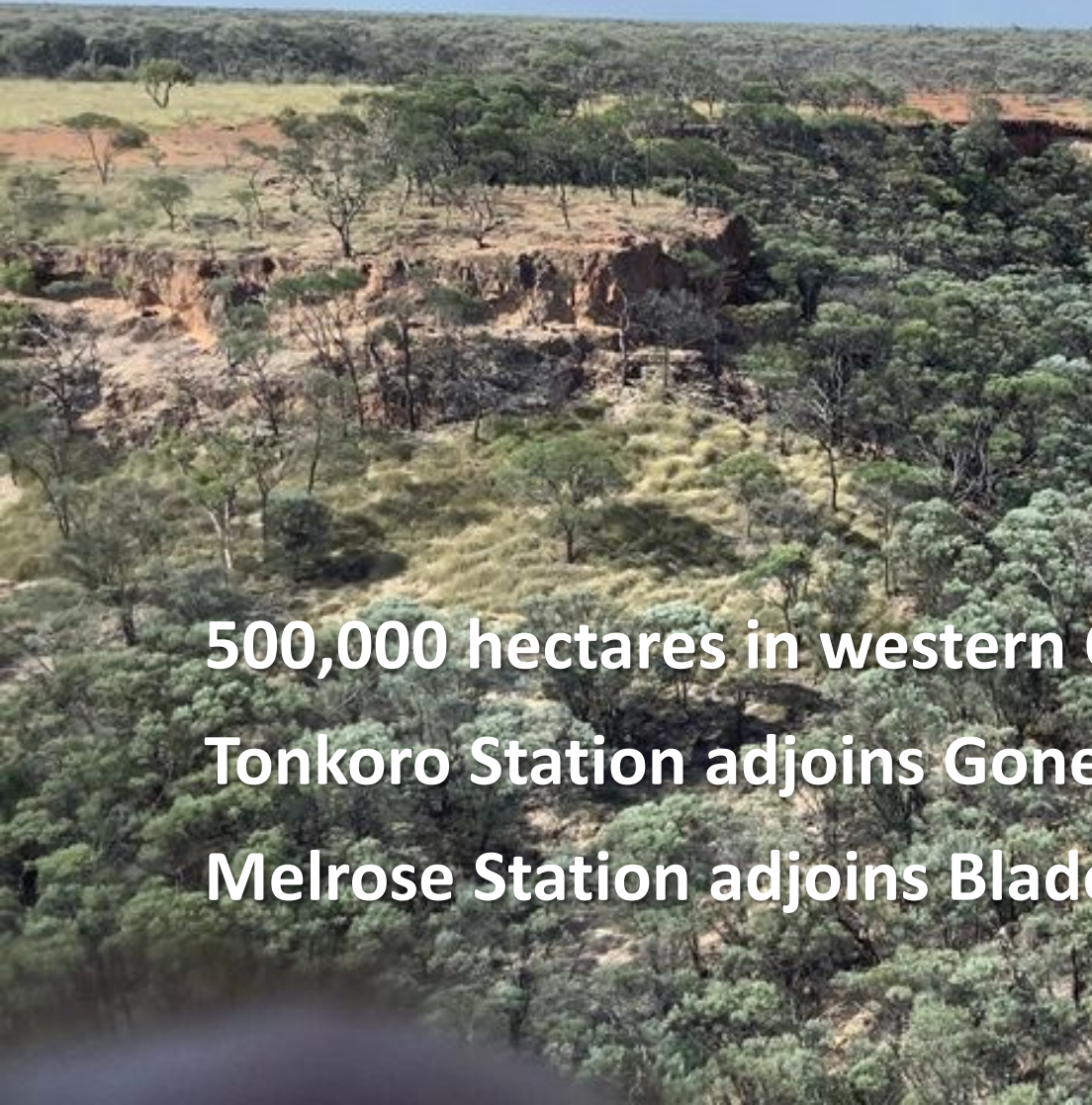
**FIGURE 13: INTERSTATE AND INTERNATIONAL COSTS PER HECTARE OF MANAGING THE PUBLIC PROTECTED AREA ESTATE**



Source: SANParks 2016 Annual report p197, NZ DOC annual report, US NPS Greenbook, CONAF annual budget, APN, Argentinian official budget for 2016.



# Vergemont, Melrose and Tonkoro Stations



500,000 hectares in western Queensland

Tonkoro Station adjoins Goveaway National Park

Melrose Station adjoins Bladensburg National Park



## Protected Area Acquisitions

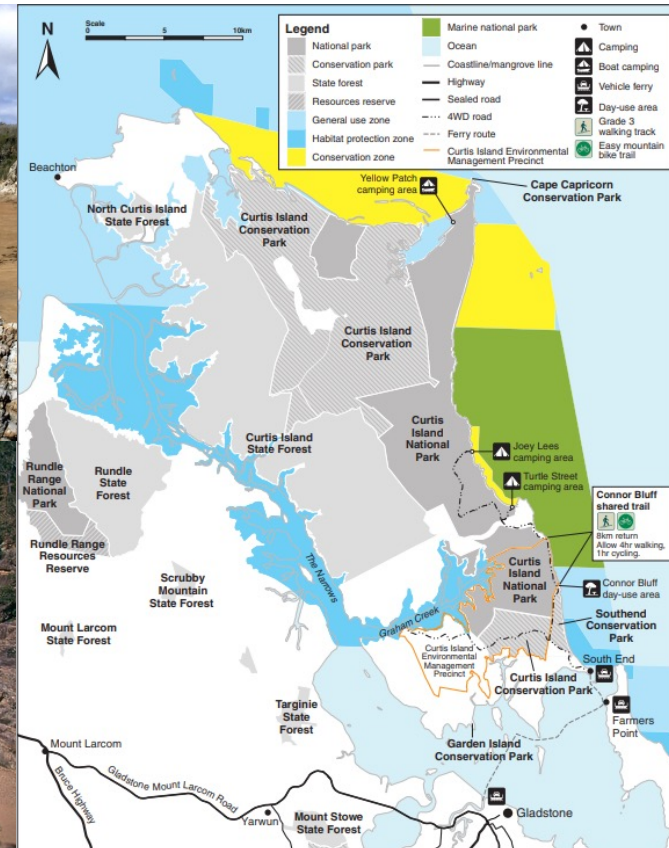
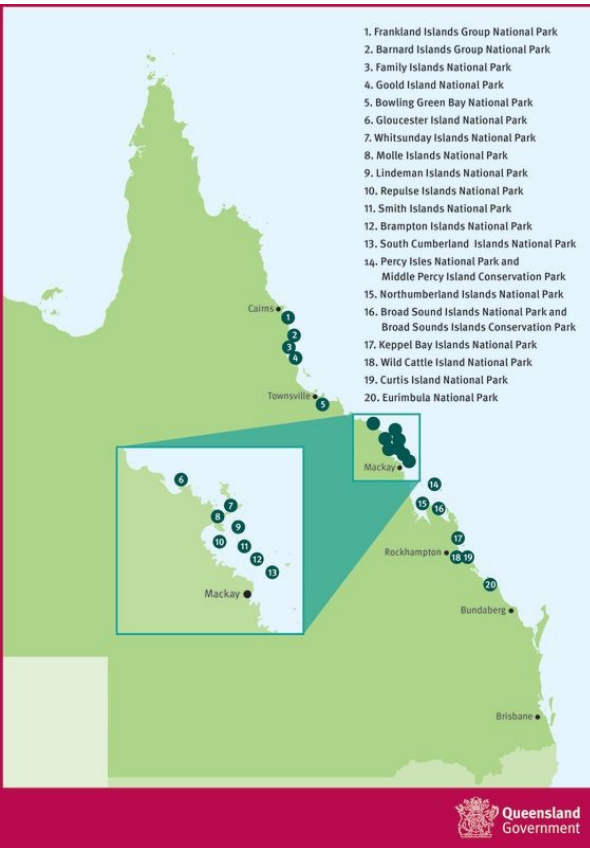
- Melrose Station—Proposed New National Park
- Tonkoro Station—Proposed New National Park
- Vergemont Station—Proposed New National Park



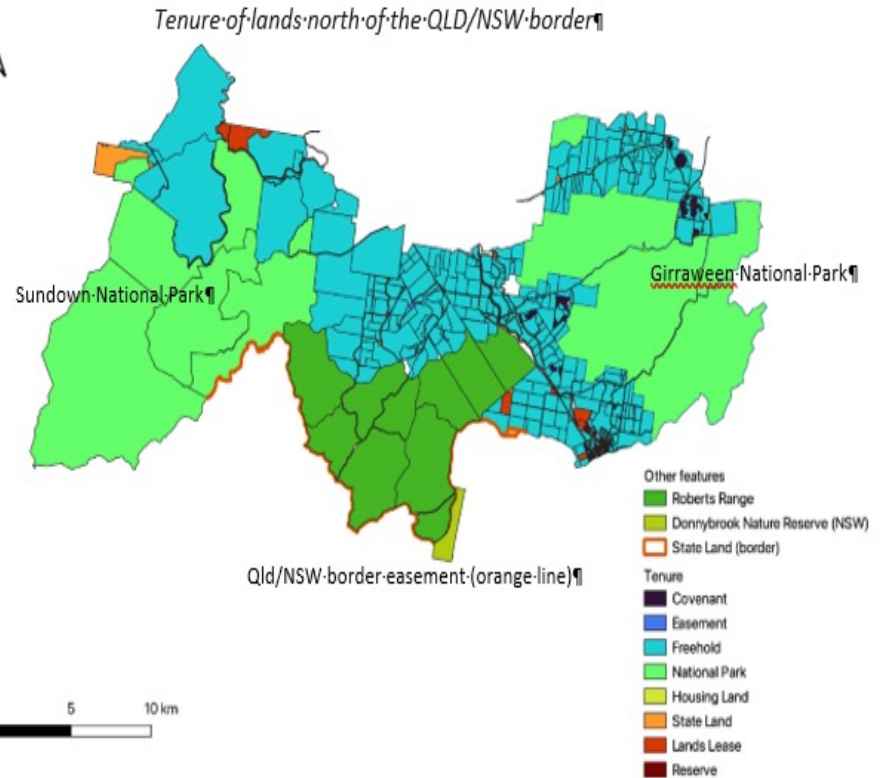
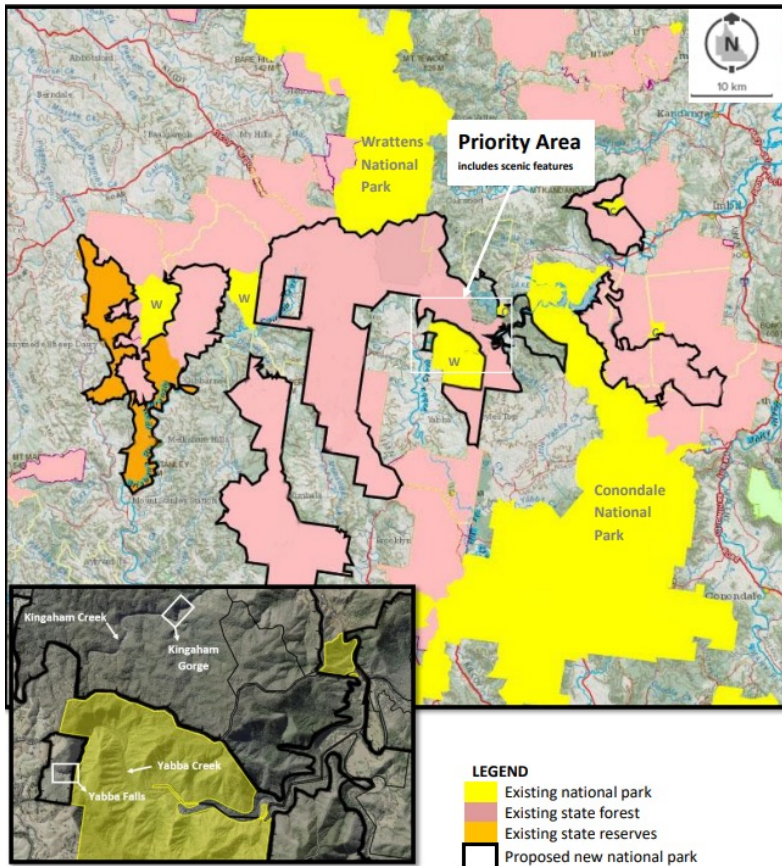
# GBR Island Arks Project



- 1,390 hectares across 140 GRB islands
- 3,000 hectares on Curtis Island for Spadely Station, which adjoins Curtis Island Conservation Park



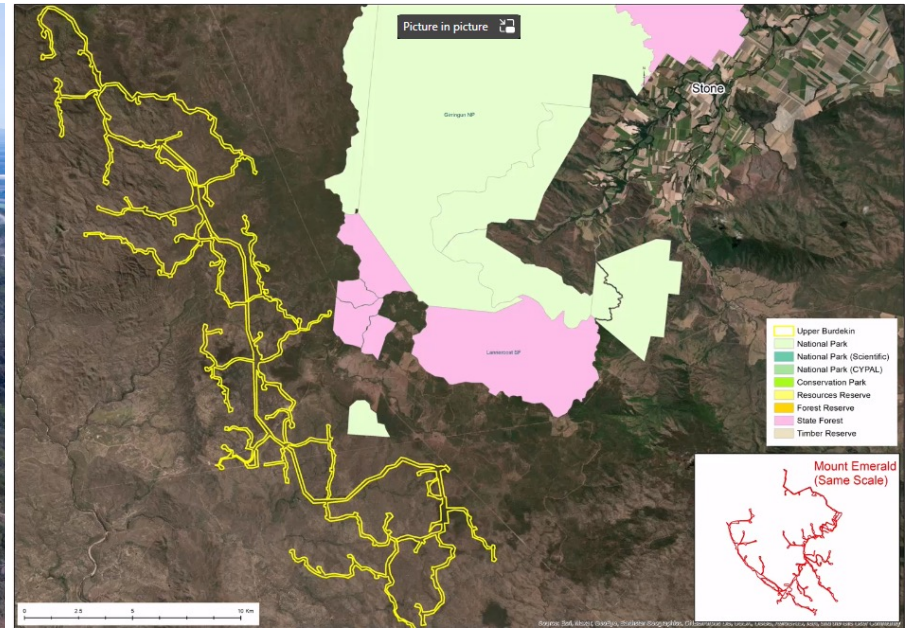
# Super Parks



Source: Adapted from Queensland Globe, 2019.  
**Figure 4: Yabba National Park Link Boundary**



# Renewables



presentation

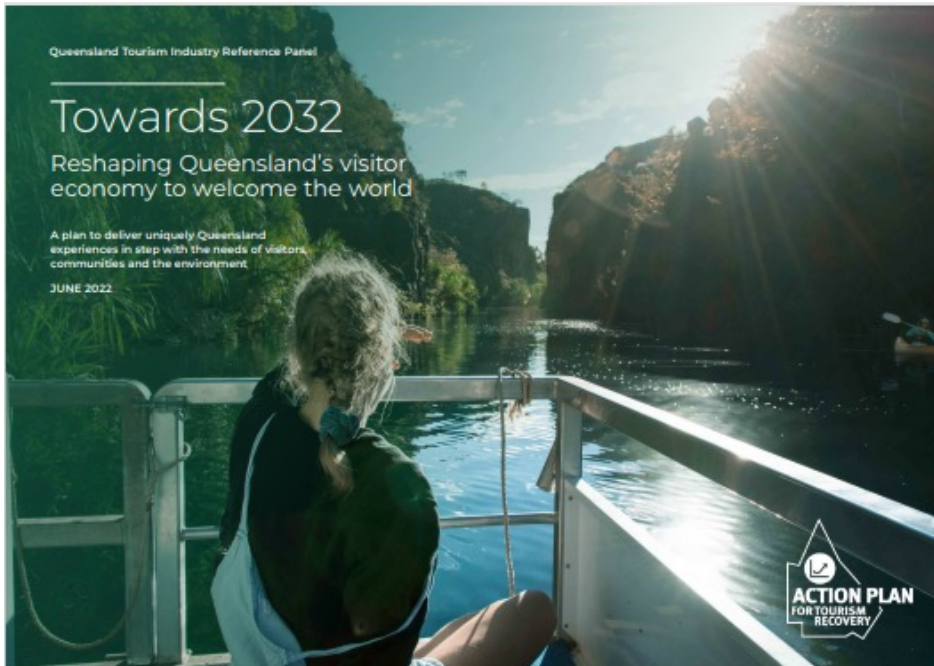


# Protect Beautiful Queensland



[www.protectqueensland.org.au](http://www.protectqueensland.org.au)

# 2032 Olympic/Paralympic Legacy



## Ecotourism Plan for Queensland's Protected Areas 2023-2028

*Redefining ecotourism in a contemporary landscape*

Queensland  
Good jobs  
Better services  
Great lifestyle



[Summary of recommendations from Towards 2032 \(dtis.qld.gov.au\)](https://dtis.qld.gov.au)